

# TIBI HERALD

## Editor

Steve Austin  
Volume 22, Issue 1  
April 24, 2025

## THIS ISSUE

*Boodle...what?*

*2024-25 Cohort*

*You Never Thought You'd  
Have to Say This*

*"...men of Issachar, who  
understood the times and  
knew what Israel should do.."  
I Chronicles 12:32*

**Texas International  
Bible Institute**

P.O. Box 1501  
1502 Avenue I  
South Houston, TX 77587  
(713) 910-2819

Online video courses at

[www.ibitenlinea.org](http://www.ibitenlinea.org)

[YouTube IBIT](#)

[Montgomery@ibitibi.org](mailto:Montgomery@ibitibi.org)

[austin@ibitibi.org](mailto:austin@ibitibi.org)

<http://www.ibitibi.org/>

<http://www.redinbi.org/>

(Masters)

## Boodle...What?

The logo for 'Boodlebox' features the word 'boodle' in white lowercase letters, followed by 'box' in a purple-to-blue gradient lowercase font. The 'o' in 'box' is a solid blue circle.

Where AI Works Together

I Chronicles 12:32 says the men of the tribe of Issachar “understood the times and knew what Israel should do.” In Matthew 10:16, Jesus tells the disciples to be “as shrewd as snakes and as innocent as doves.”

We face the constant challenge of discerning what is Christian or not, important or not, useful or not, mission-critical or not—individually and at TIBI.

Never has this been more true than with the field of artificial intelligence (AI), which is exploding. It’s impossible to watch programs, read anything online, or peruse email or social media without being bombarded by new bots, agents, and applications of AI. It’s overwhelming, as if we are being flooded and are now adrift at sea without knowing on what shore we might wash up, and what will be left when we arrive.

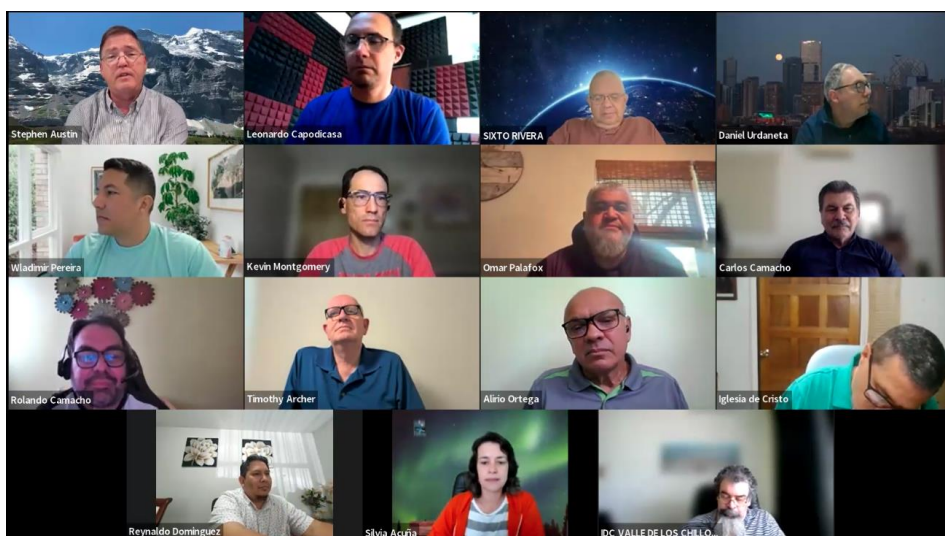
Only a year ago, we might have looked at AI from afar and believed that we could ignore it or safely distance ourselves from it. But now, it is all around us; the question is not *if* we will use it, but *how*. We can either be proactive and advance Kingdom projects and growth by applying Christian principles to AI, or waste the opportunity, allowing other people or forces to decide for us.

So at TIBI, we have decided to focus on learning how AI works, and how we might use it to prepare and teach courses, and assess students’ work.

The title of this article is Boodle...what? **Boodlebox!** Boodlebox is a company which offers a multi-faceted suite of more than 1000 AI tools which can be applied to any project or topic. They teach how one can use AI at all levels and all types of education. In particular, they want to provide ways for educators and students to collaborate, so that AI can do what it does well, freeing up people to focus on what AI cannot do.

BOODLE is an acronym that describes six different steps in how one can take advantage of their AI tools—utilizing AI for the right situations, working with the right bots and prompts, incorporating existing knowledge, combining various AI tools for best results, and creating teams of people working together on the same project. This is exactly what we want to do with AI at TIBI. So after about a month of testing Boodlebox, we decided to try it with our admin team and faculty.

The licenses are extremely affordable, the selection of tools is amazing, the Boodlebox interface is easy to learn and use, and the platform and all information input to it is secure. And personally, I think it's a lot of fun just to play with the different tools to see what they do!



We have already had two AI training seminars with our faculty to discuss AI, and we plan at least two more. We show the faculty what tools there are and how to use them, then work together within the Boodlebox platform on certain kinds of tasks like preparing course syllabi or assignments, teaching creatively with AI, and assessing student learning.

Depending on the results of our work, we are also considering providing Boodlebox access to TIBI students, as yet another tool to help them study and do ministry for many years.

Stay tuned for updates as we implement this over the next few months, and as we continue to learn and grow. If you'd like to know more about it, we are happy to answer any questions you might have.

If you want to learn more about Boodlebox itself, France Hoang (CEO) and Meredith Lancaster (director of customer experience) have been extremely helpful in orienting us in how to get started with Boodlebox and think creatively.

## 2024-25 Cohort

The Lord has blessed TIBI with an excellent cohort for the 2024-25 school year. We have 13 new scholarship students in all, plus a number of other students who did not receive a full-time scholarship but want to study with us on their own time.

This year's students are Cristian Delgado (Colombia), Darling Gonzalez and Lucero Ramirez (Argentina), Gabriel Jaen and his wife Michelle (Panama), Grisel Rodarte (Mexico), and a group from various cities of Venezuela—José Marin, José Miguez, Jesús Moreno, Alejandro Fernandez, Rosa Martinez, Jahan Rangel, and Rafael Perez. That represents five different countries, and we have students who are full or almost full-time from Chile, Perú, Ecuador, Costa Rica, Germany, and the US. These are all on our live Zoom platform, in class up to 20 hours per week.

We also have, as always, students from the Latin American Bible Institute in Mexicali, Mexico, and the Baja Bible Institute in Ensenada, Mexico, who take a number of courses with us every cycle. In all, we have averaged a little over 100 students in live Zoom classes each cycle this school year.

They are a good group, pleasant to be around, good-humored, and eager to learn. They are all leaders in various areas of their churches, and as part of their commitment, they must spend at least 10 hours per week in practical work in their churches and communities. Many of them spend more than that amount.

They have worked hard so far this year and shown intelligence and perseverance in courses like Hebrew and Greek! We ask for your prayers for their academic, spiritual, and ministerial growth as they continue their work with us. And please pray for the next group of scholarship candidates, who even now are in the process of evaluation and selection for the 2025-26 cohort.



Screen shot from 2024 orientation

## You Never Thought You'd Have to Say This

Most parents find themselves saying ridiculous things to their children, like, “Spit out that plastic fork tine in your mouth right now!” or “Don’t set that on fire again!”

After years of video conferencing, with Polycom, Vidyo, and Zoom, our orientations now include warnings or advice for students or teachers as they use Zoom, such as:

- *Tell your 12 year-old son not to walk behind you in his underwear while you’re teaching.*
- *Tell your wife the same thing—she is on camera!*
- *Please adjust the camera so we are not looking up your nose (or only at your forehead)*
- *Leave your camera on at all times (after talking to people who turned them off and abandoned ship, evidently.)*
- *Joe. Joe! JOE! Quit talking to someone off camera. It’s obvious you’re not listening.*
- *Please turn off your mike when not speaking, especially with your washing machine going (or the carpenters hammering...or many other distractions. How in the world can you stand that and still learn?)*
- *If you teach, please close the street window, the trucks are drowning you out.*
- *Please ask your 2 year-old son to stop using you as a jungle gym while in class; we don’t think that is an optimal learning situation.*
- *You can’t lie down on your bed during class.*
- *It makes us nervous (and dizzy) when you put your phone with Zoom on your motorcycle handlebars and we watch you tool through your city.*

Yep, all these really happened! This is how crazy rules are created.

Texas International Bible Institute  
1502 Avenue I  
South Houston, TX, 77587